

## HXY-1 SERIES RCBO USER INSTRUCTIONS

### TESTING

#### Insulation Test

The HXY-1 RCBO must have the line side Neutral and Functional Earth disconnected before any insulation tests are carried out. Failure to do this could result in low readings and damage to the RCBO.

#### Periodic Test

Tests should be carried out:

After the first connection and after every reconnection.

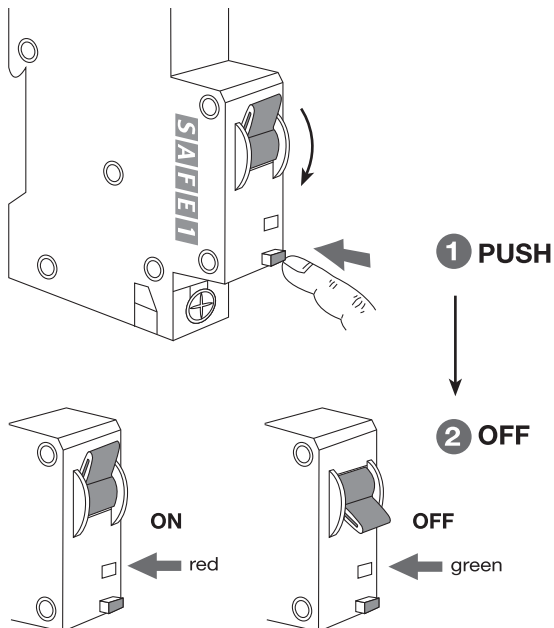
Every month for all RCBO's installed in all conditions.

Press the test button located below the inspection window.

The RCBO should trip every time, if the RCBO does not trip there may be no supply to the RCBO or the RCBO is faulty.

Replace immediately if supply is available!

The minimum operating voltage for the test button is 205V AC.



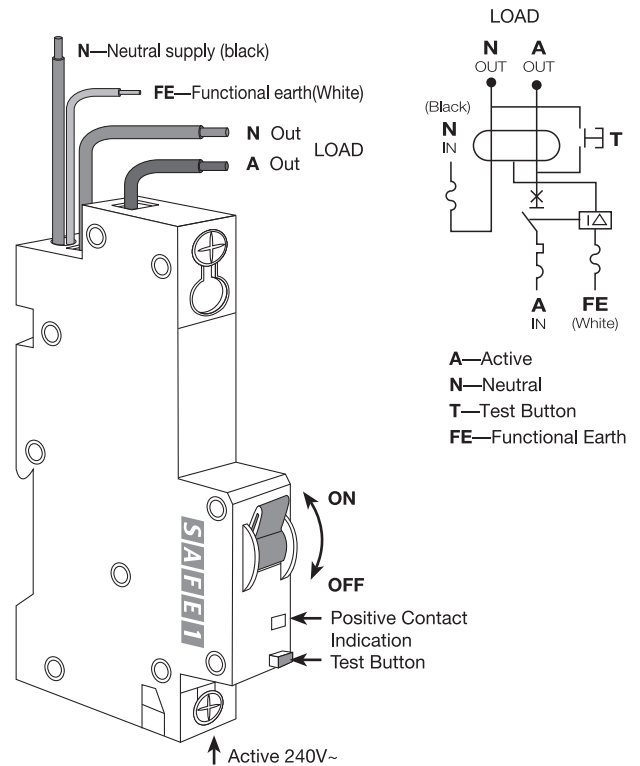
## WARNING: INSTALLATION BY LICENSED ELECTRICIANS ONLY

### Warranty

A warranty period of 18 months is offered on SAFE1 RCBO's from the date of manufacture relating to any material of manufacturing defect. If any RCBO's are found to be defective it must be returned via the installer and supplier.

The warranty is withdrawn if:

- explanation of defect must be included when returning goods.
- after inspection by SAFE1 quality control department has found the device to have been installed in a manner, which is contrary to AS/NZS 3000 rules/regulations and accepted practice within the industry at the time of installation.
- the procedure for return of goods has not been followed.



### Technical Data : HXY-1 Series

In: \* 6A, 10A, 16A, 20A, 25A, 32A

Un: 230/240 V~

IΔn: 30mA

Icn: 10000 A

Hz: 50/60

Standard: AS/NZS 61009 : 2004

Approval No: NSW20922

\* See marking on each product